



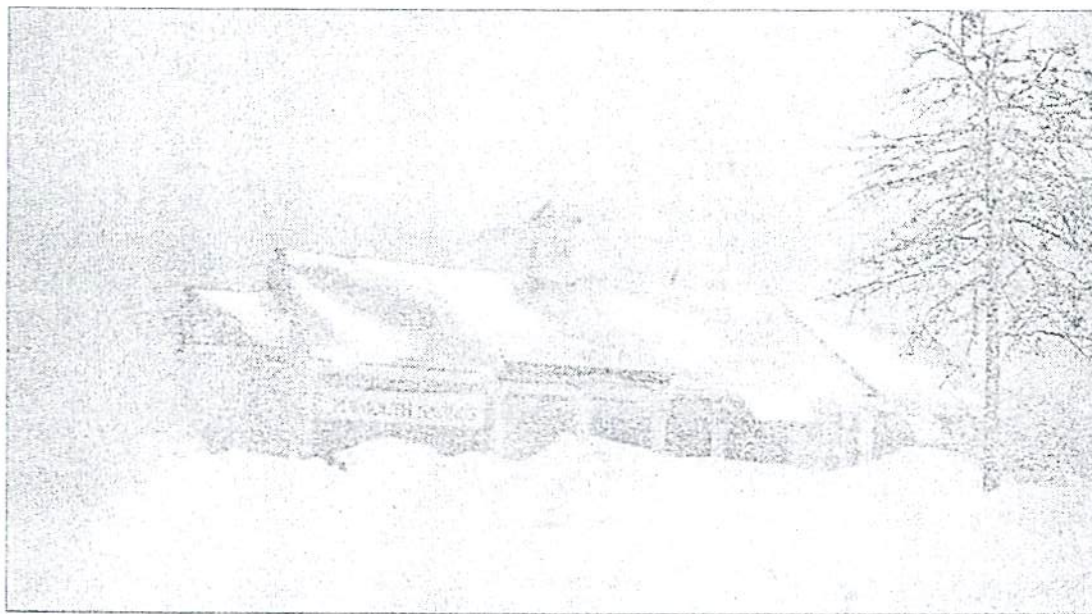
First Parish Church is a mere ghost of itself as seen through drifting snow and bare trees.



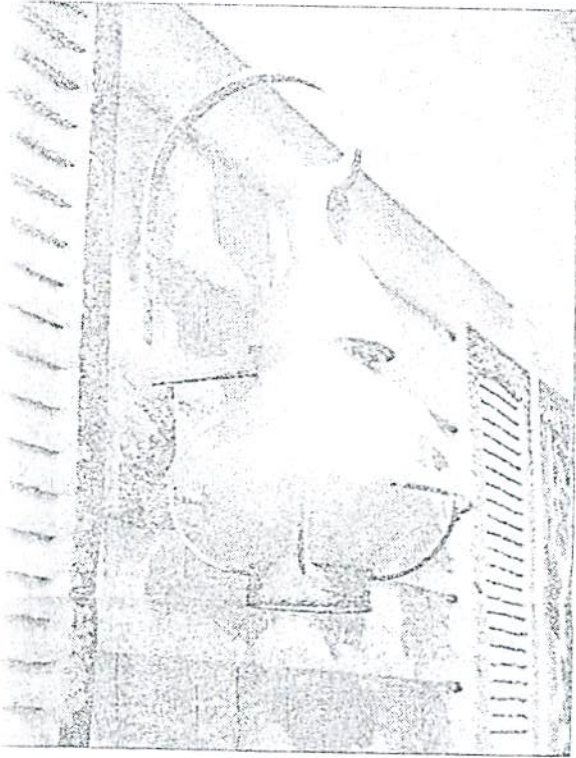
You can't get there from here; high winds knocked over a pine tree, blocking entry to Meeting House Road.

## Scenes from a Blizzard

January 23, 2005

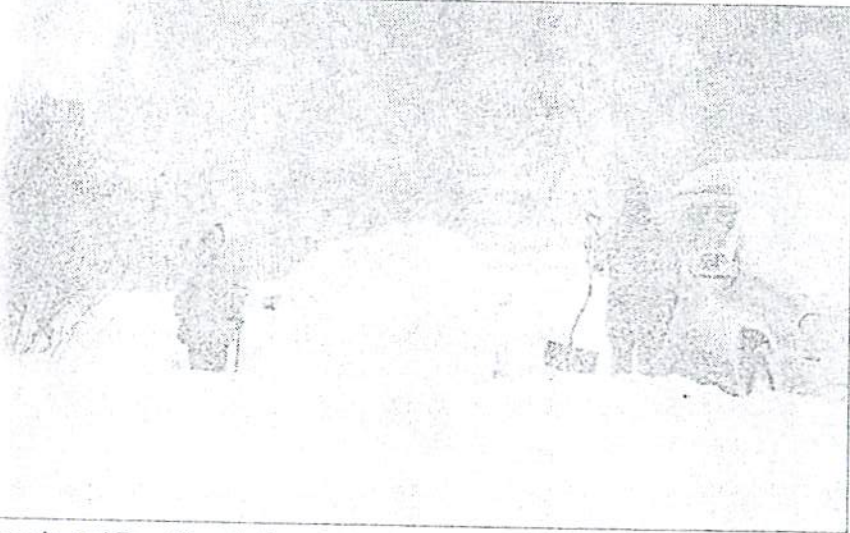


You can't get there from here, part 2; drifts of snow obstruct both the front door and drive-through at Plymouth Savings Bank.



A house lamp manages to hang in there despite an onslaught of snow.

Photos by KAREN W. WONG



Angela and Tom Sinnott dig out, two Duxburyites who don't know the meaning of the words "just give up."



Snow plow drivers working on little sleep needed something to keep them alert. A lone driver heads back to his plow after getting his second wind thanks to Dunkin' Donuts and a cup o' Joe.





Westwinds Bookshop wasn't selling any reading material on Sunday. Wise residents had made their purchases beforehand and curled up with a few good books to await the storm's passing.



Wishful thinking.